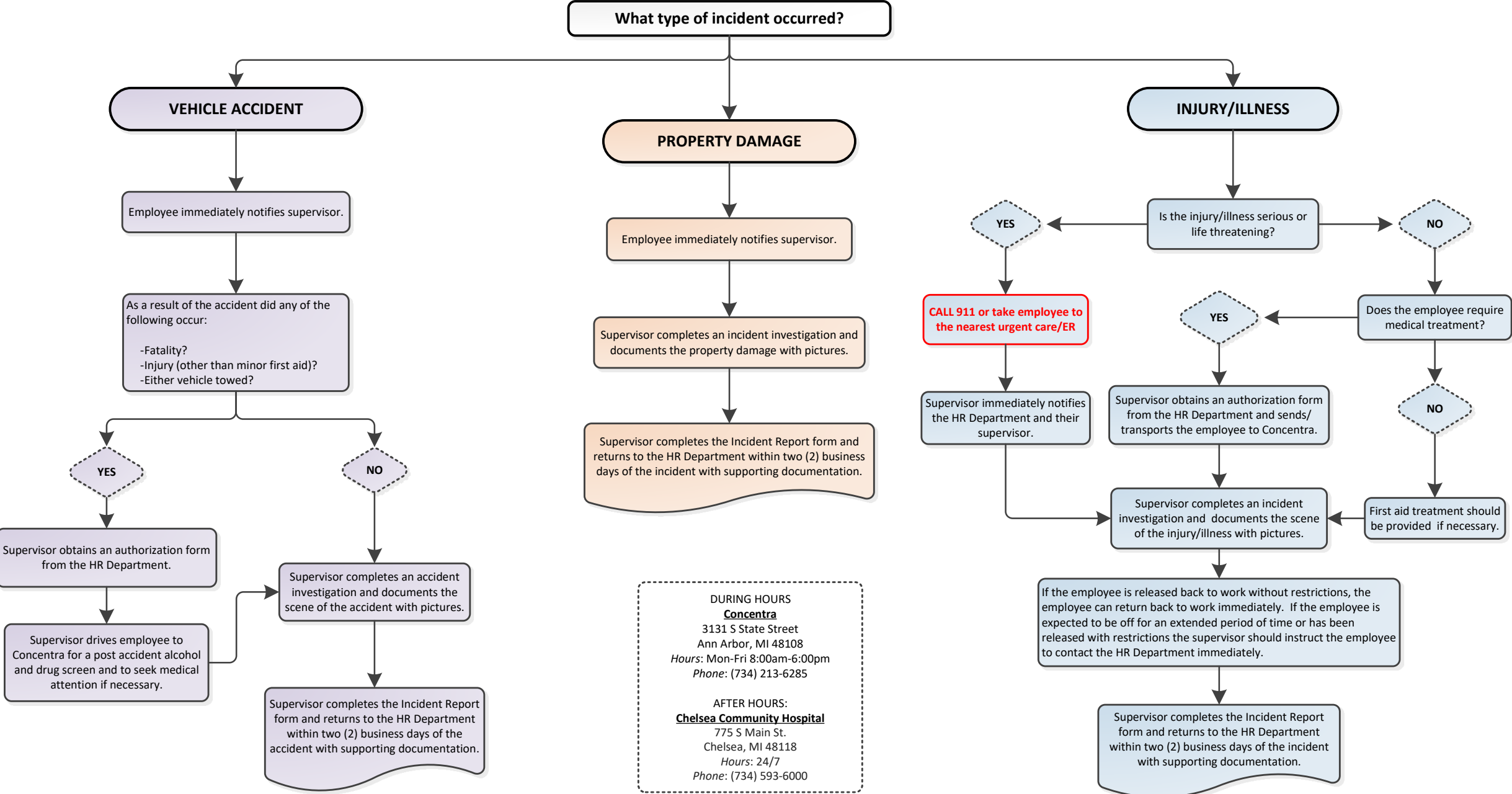


WASHTENAW COUNTY ROAD COMMISSION INCIDENT REPORTING PROCEDURES



DURING HOURS
Concentra
 3131 S State Street
 Ann Arbor, MI 48108
 Hours: Mon-Fri 8:00am-6:00pm
 Phone: (734) 213-6285

AFTER HOURS:
Chelsea Community Hospital
 775 S Main St.
 Chelsea, MI 48118
 Hours: 24/7
 Phone: (734) 593-6000